

My Neighbor Is A Caterpillar

Plot Connections – Grade Four

Indiana Standards Connection

Reading

Comprehension and Analysis in Literary Text

4.3.2

Identify the main events of the plot, including their causes and effects on future actions and the major theme from the story action.

4.3.6

Determine the theme.

Listening and Speaking

Skills, Strategies and Applications

4.7.1

Ask thoughtful questions and respond orally to relevant questions with appropriate elaboration.

4.7.2

Summarize major ideas and supporting evidence presented in spoken presentations.

4.7.7

Emphasize points in ways that help the listener or viewer follow important ideas or concepts.

Lesson Summary:

*Students identify plot, theme and main incidents of the plot sequence in *My Neighbor Is A Caterpillar* and explain how the specific events in the story influenced future actions of the characters. Using shared reading, students will refer to the attached plot outline to identify various elements. Each student selects a specific event in the plot and matches it to another related event. Students write a paragraph about their choice and then, in their reading groups, complete the handouts, comparing and contrasting their selections and opinions. Although each student should complete his or her own handout(s), they should discuss them in their individual groups and elect one student to present his/her handout and a summary of the group discussion and agreement/disagreement.*

Pre-Assessment:

- Conduct a brief review of the elements of the plot outline: Introduction, Rising Action, Climax, etc.
- Divide students into small groups of three to four students and distribute the handouts to each student.
- Ask each group to take turns reading from *My Neighbor Is A Caterpillar* or read the book together as a class. This may take more than one class period.
- Instruct students to select at least one event in the introduction or rising action that influences a future action and write a paragraph explaining their choice and how it influences and relates to the future event. This should be done individually by each student.
- Then have students complete the handouts as a group, comparing and discussing their choices.
- Have one student from each group explain how he/she filled out the plot outline and organizer, and whether the group agreed with his/her choices. If there were disagreements, the dissenting student should stand and deliver his argument as well. Emphasize courteous and productive debate in these situations.
- Collect plot graphs to assess individual understanding.

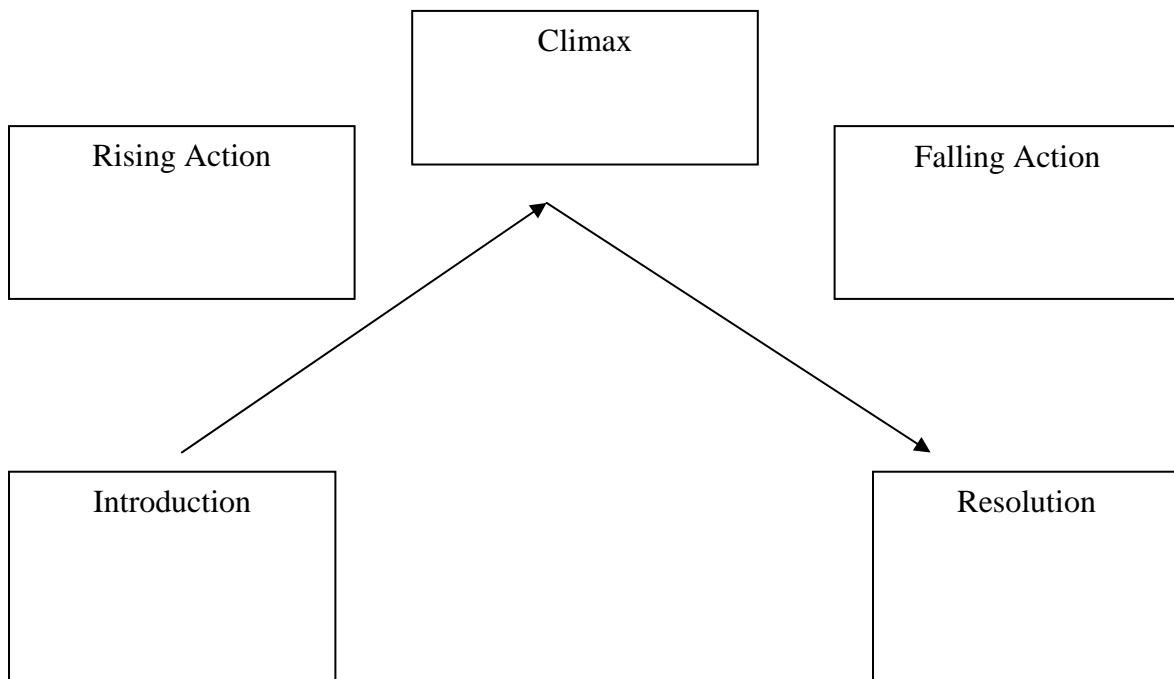
My Neighbor Is A Caterpillar Plot Connections – Grade Four

My Neighbor Is A Caterpillar Plot Outline

Name _____ Date _____

Directions:

- ◆ In your group, read *My Neighbor Is A Caterpillar*.
- ◆ Place the events of the story on the plot graph.
- ◆ Select at least one event in the introduction or rising action that influences a future action.
- ◆ Write a sentence or two explaining your choice.
- ◆ Discuss your findings with the group and agree on one example to share with the class.



Events you selected:

Explain how they connect:

My Neighbor Is A Caterpillar
Plot Connections – Grade Four

My Neighbor Is A Caterpillar
“Before” and “After” Story Organizer

Name _____

Date _____

Directions:

- ◆ List the main events in the “Before” column, including the actions and feelings of characters that happen before the climax.
- ◆ List the main events in the “After” column, including the actions and feelings of characters that happen after the climax.
- ◆ Think about how an action may affect a future action, a set of events may have a particular outcome or feelings may change. How were Michael’s feelings changed by his interaction with Mr. Jackson? Was Mr. Jackson changed by the interaction between the two? How?
- ◆ Draw connecting lines from events in the “Before” column to events in the “After” column.

Before (the climax)	After (the climax)

My Neighbor Is A Caterpillar
Plot Connections – Grade Four

Scoring Rubric

	Great Success 4	Success 3	Some Success 2	Needs Improvement 1
Graphic Organizer	Identifies all main events of the plot	Identifies most of the main events of the plot	Identifies a mixture of main and minor events of the plot	Identifies only one or more minor events of the plot
Paragraph Content	Identifies main “before” and “after” events, provides an exceptionally clear explanation of one of these connections and of how one affects the other.	Identifies some main “before” and “after” events, provides a clear explanation of one of these connections and of how one affects the other	Identifies at least one main “before” and “after” event, provides an unclear connection of how one event affects the other	Identifies no main “before” and “after” event, possibly provides a connection but without explanation
Paragraph Conventions	Contains no errors in grammar, usage or mechanics	Contains one error in grammar, usage or mechanics	Contains two errors in grammar, usage or mechanics	Contains three or more errors in grammar, usage or mechanics